

Stericert

EO controls

Stericert EO controls let you update existing EO sterilizers¹. With Stericert controls, you run faster cycles, keep your equipment investment intact, minimize downtime, and maintain existing work practices.

Sterilize faster and at less cost with Stericert:

1. Shorter cycle time of **10 hours** (including aeration) lets you run two loads per day.

Start the sterilizer as late as 8 PM and have EO-sterilized goods ready for the next morning's surgeries!

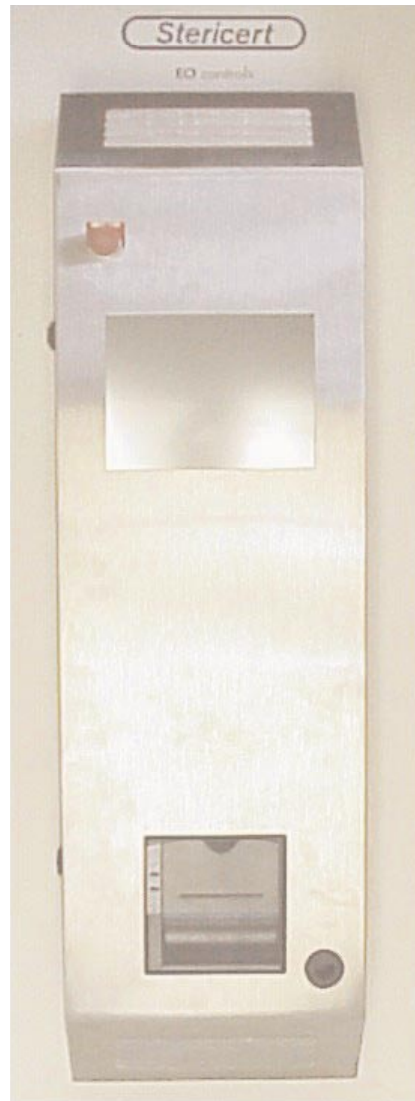
2. Use **25% less EO gas** than your current controls.
3. Keep your current chamber, carts, and reprocessing procedures.
4. Use today's blends (Oxyfume 2000, 2002, EO/CO₂), and tomorrow's too! Stericert is Steriflo[®] compatible, with no hardware changes needed to use the new blend when it is available.

You want EO controls that are *reliable, easy to use, and safe*. Stericert uses industrial EO control technology, and a Windows[®] touchscreen to enter cycle information² and show you the progress of the cycle at a glance.

Cycle records make or break QA. Stericert keeps cycle records on paper and in computer data files.

Safety assured by hardware and software features developed in a risk analysis to sense and control the process. Performance is assured by compliance with AAMI/ANSI ST24 and 41 with the 10-hour cycle validated in studies at two hospitals³.

The reliability and robustness of EO blend sterilization is well known and unquestioned⁴. Now, with Stericert, the process has been made faster and easier to use.



¹Castle 3571, 3671, 4271, Amsco/Steris 2000 and 3000 series EO sterilizers

²Barcode scanner optional

³L. Iaboni, W. Dettmer, S. Conviser, Infection Control and Sterilization Technology, 1998, 4(5).

⁴M. Alfa, P. DeGagne, N. Olson, Infection Control and Hospital Epidemiology, 1997, 18(9):641-645 and M. Alfa, P. DeGagne, N. Olson, and T. Puchalski, Infection Control and Hospital Epidemiology, 1996, 17(2):92-100.

Stericert

- It gets your goods to surgery faster.
- It's easier.
- It saves you money.

Using Stericert

Stericert's touchscreen tells you:

- where you are in the cycle
- what you're doing with the sterilizer
- what the sterilizer is doing
- when the cycle will be done



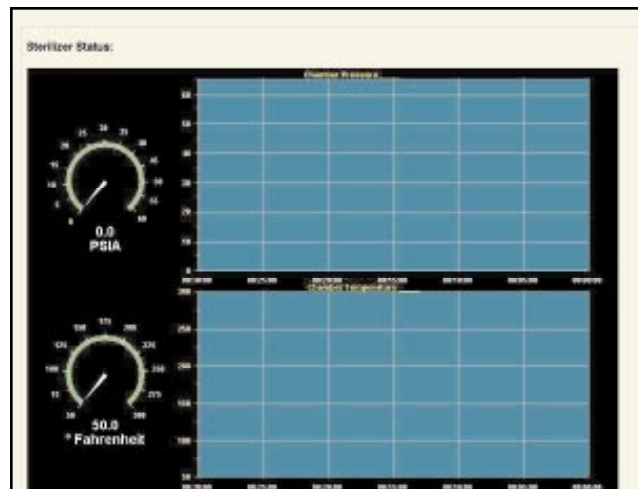
Starting a cycle

Stericert's startup screen tells you what cycle you've selected and asks you to enter cycle ID information.

You can't start a cycle unless the door is closed and sealed and the load and operator IDs are entered.

During a cycle

Stericert shows you a chart, gauges and numerical readouts of pressure and temperature, time remaining, and keeps you completely informed on what is happening in the cycle.



Managing Stericert

Screens for calibration, cycle modification, touchscreen language selection (English and Spanish), and system diagnostics are password protected.

Technical Details

User Interface:

Windows XP-based touchscreen

Controller:

Allen-Bradley Micrologix 1500

Printer: 2 1/4" paper

Computer Data File Cycle Records:

Microsoft Excel compatible, Windows – compatible network storage capability standard

Single and double-door models available.

or more information, contact

H & W TECHNOLOGY, LLC

PO Box 20281, Rochester, NY 14602-0281

585.218.0385 Fax 585.218.4271

www.stericert.com e-mail: info@stericert.com

or your local Honeywell Sterilants representative